



# ELIMINATOR TAIL LIGHT ASSEMBLY

## FLT Models Only:

- Remove license plate support tube
- Use supplied mounting brackets to reinstall bag supports to frame (see fig 1)

## FLT & FLSTC Models:

- Remove turn signal bar.

## FLSTC, Fatboy, Sportster and Dyna Models:

- Remove license plate mounting assembly.

## All Models:

- Remove seat, unplug rear tail light wiring harness, and install Load Equalizer plug assy in between.
- Remove tail light

1 Install new Eliminator tail light fender mount to fender with supplied hardware (see fig. 2 & 3)

2

- On Fatboy, Sportster and Dyna Models it maybe necessary to bend the lowering mounting tabs to fit fender properly.

3 Install taillight and license plate to mount using the 4-1/4 x 20 counter sunk screws.

4 Plug the 6 pin plug into the stock wire harness and secure the wires so they do hit the tire.

5 Our wiring harness also accommodates for the use of a fender tip light located behind the taillight (see fig.4)

**NOTE:** \*\*We also have available a run, turn and flashing brake converter (P/N CV4805) for use with the Eliminator Tail Light

\*\*If you are using (P/N CV-4805) make sure the load equalizer is plugged into the wire on The Flasher, and not the tail light plug!

\*\*If your bike is equipped with a factory alarm, you will need to purchase a load equalizer (P/N CV-4820)



Fig. 1

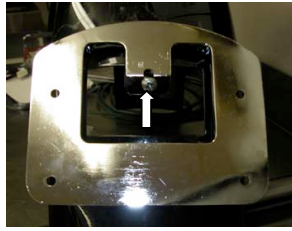


Fig. 2

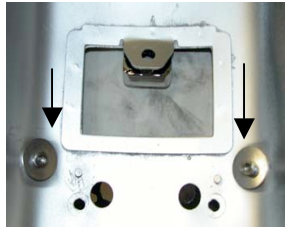


Fig. 3 (FLT & FLSTC Models Only)

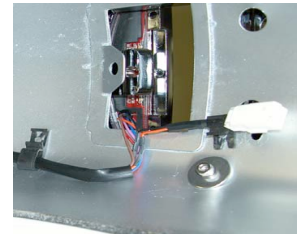


Fig. 4 (Plug for fender tip light)

## Warranty Policy

Cycle Visions' obligation under "Our Warranty Policy" is limited to one (1) year from date of purchase to repair or replacement of the defective item (s). Chrome, polished, powder-coated, anodized finishes or electrical parts are limited to thirty (30) day from date of purchase.

This warranty will be void on all products that show evidence of misapplication, improper installation, abuse, lack of proper maintenance, negligence, or alteration from their original design

The consumer will be responsible for removing from the vehicle any defective item (s), transportation costs prepaid and for reinstallation upon return by Cycle Visions. The loss of use of the product, loss of time, inconvenience, commercial loss or consequential damages is not covered. Cycle Visions reserves the right to change the design of any product without assuming any obligation to modify any product previously manufactured. Warranty returns of Cycle Visions products are few because of our high quality products.

Carefully inspect all parts.... If you find that your parts arrived in damaged conditional all original packaging material (box and other materials) must be saved to make a proper damage claim within seven (7) days. You must

be able to present the damaged boxes and materials to the freight carrier to verify your claim. The user shall assume all legal, personal, injury risk and liability and all other obligations, duties and risks associated therewith.

**Cycle Visions** <sup>TM</sup>

San Diego, CA (619) 295-7800

[www.cyclevisions.com](http://www.cyclevisions.com)

See our other products on the web!

Patent Pending



